



## Esthetic solutions using direct composite resins reinforced with fiber.

Paulo Tomio Minami 1.

1 PurAdesão Study Group  
Coordinator of the Dentistry Course at APCD Health  
Co-Coordinator of Dentistry Courses at APCD SBC and Ipiranga

### **Female patient, 40 years old.**

Main complaint: Deviated dental midline, dental arch disharmony – shapes.

- The patient doesn't want to undergo orthodontic treatment due to the treatment time.
- She wants a faster solution.

### **Clinical Examination**

Loss of element 11 when she was a child, element 12 was transformed into 11 and element 13 into 12.

### **Planning**

Moldings, functional diagnostic wax-up, restorative test, whitening dental treatment, application of restoration, finishing and polishing techniques, follow-up.

### **Conclusion**

In order to achieve functional esthetic results there's the need to know the concepts and principles of esthetics, of restorative materials and techniques to achieve maximum satisfaction, both by the patient and the professional.

For direct restorations using composite resin, it is essential to know the adhesion concepts.

### **Photography**

**Figure 01. Closed lips.**



**Figure 02. Half-closed lips.**



*Figure 03. Smile*



*Figure 04.*



*Figure 05.*



**Figure 06. Functional diagnostic wax-up.**



**Figure 07. Mold for restorative test.**



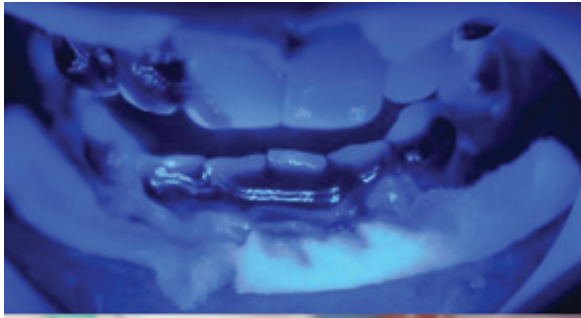
**Figure 08. Restorative test conducted with bis-acryl resin Structur 3.**



**Figure 09. Dental whitening treatment with clinic technique Clàriant Angelus® Office 35%.**







**Figure 10. Midline positioning treatment.**



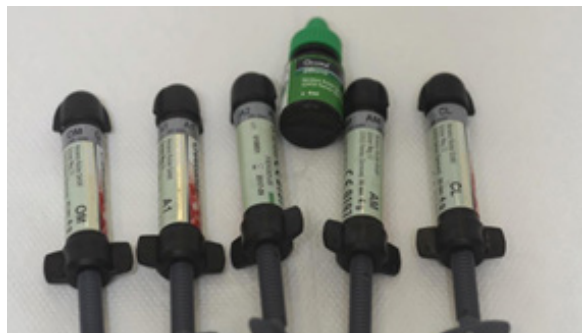
**Figure 11. Correct placement of teeth.**



**Figure 12. Removal of restorations, positioning of silicone wall, preparing a sulcus for positioning the restorations. The restorations were superposed on the teeth to get the midline positioning.**

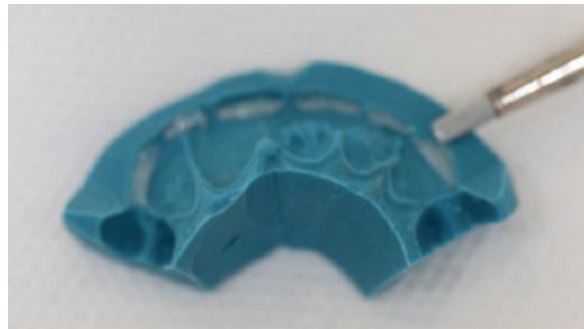


**Figure 13. Materials used: Gluma 2 Bond Adhesive (HeraeusKulzer), Charisma Diamond composite resins (Heraeus-Kulzer), Fibrex-Lab (Angelus®).**

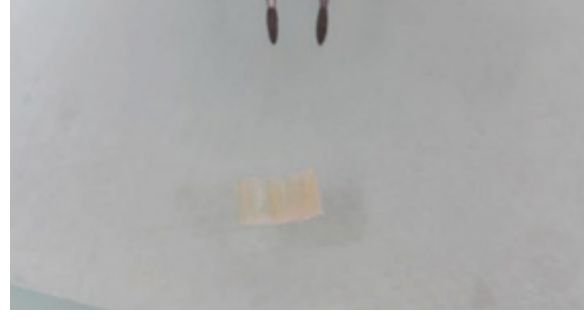




**Figure 14. Histological technique of dental reconstruction.**



**Figure 15. Use of fibers (Fibrex-Lab Medial Angelus®) for pontic reinforcement.**





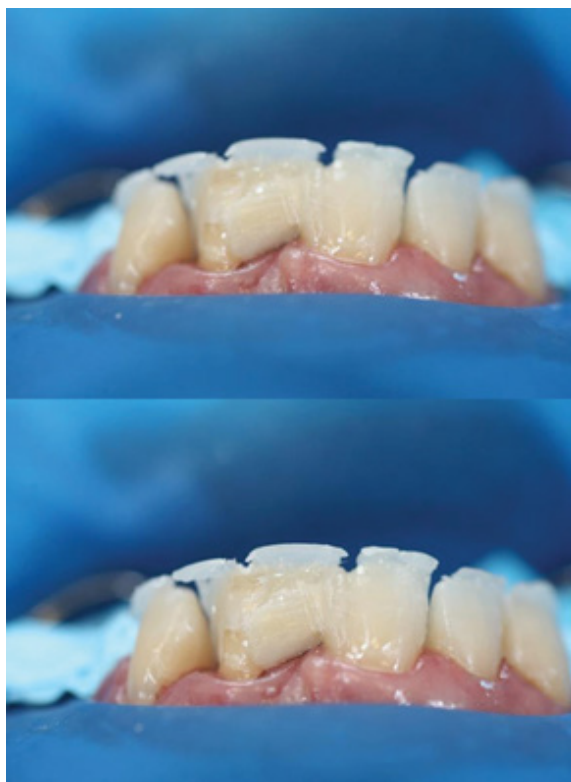
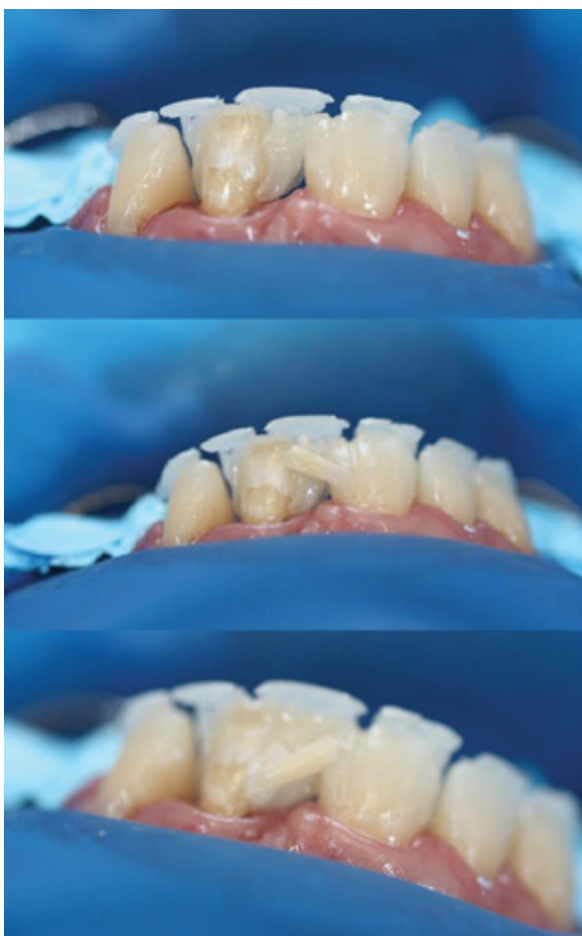
**Figure 16. Preparation of incisor teeth with Charisma Diamond Resin in the CL color.**



**Figure 17. Placement of the reinforced fibers.**

**Histological technique:**

- Insertion of small portions of opaque resin in color OL (Dentin layer);
- Over this layer Enamel Resin in color A1 was applied (Enamel layer);
- Finishing with translucent resin in CL color (incisal);
- Use of modeling brushes (rubber) and of synthetic weight (brushes).



**Figure 18. Application of gum color resin (AmarisGingiva-Voco), for reproduction of the spaces between the teeth (papillae).**



**Figura 19.**



**Figure 20. Lingual view, pontic reinforced with fiber over dental elements.**



**Figure 21. Finishing and polishing, pure diamond polishers for composite resins (Tri Hawk)**



**Figure 22. Initial.**



*Figure 23. Final.*

