



Step-by-step instructions on sealing of Exacto Posts

Marcos Barceleiro

*Specialist, Master and Doctor in Dentistry at UERJ
Associate Professor at Federal University Fluminense, Nova
Friburgo Campus
Coordinator of Masters program in Dentistry at UFF, Nova Friburgo*

Description

Patient arrived at the Clinic requesting posterior fixed prosthesis on the right side, and anterior esthetic rehabilitation.

Before the clinical and radiographic examination, the opted treatment was ceramic facet was performed for tooth 11, contact lens on 12 and fixed prosthesis in Metallic-Ceramic in the region between 13 and 16.

With the treatments defined, the endodontic treatments were performed in the prosthetic pillar elements, and the patient returned to begin with the prosthetic rehabilitation.

In tooth 13, there was the need for sealing an intra canal retainer. The Exacto post was sealed with resin cement, after applying 3-step light-curing adhesive system inside the canal.

From this point on, dental prosthetic preparations were performed on the elements in question, molding, and provisional restorations.

The facets and lenses were sealed with resin cement light-cured for facets. The fixed prosthesis was sealed with zinc phosphate cement.

The patient is in follow-up.

CAPTIONS OF THE FIGURES

1 – Initial aspect of the case – Patient Smiling



2 – Initial aspect of the case – Intra oral view on the left side



**3 – Initial aspect of the case –
Intra oral view on the right side**



4 – Initial Case radiography



5 – Preparation for facet performed in tooth 11



6 – Preparation for facet performed in tooth 11



7 – Preparation for facet performed in tooth 11



8 – Preparation for facet performed in tooth 11



9 – Provisional Restoration



10 – Color Selection



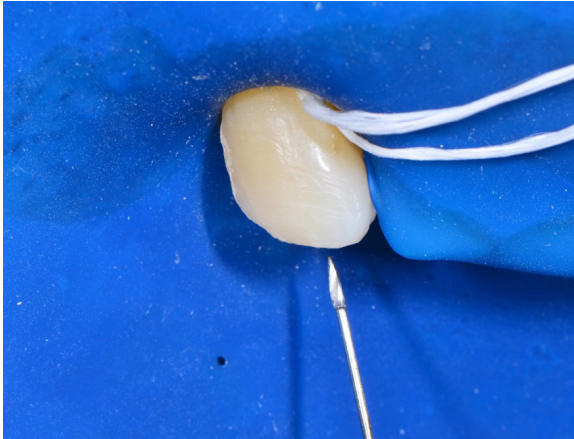
11 – Color Selection



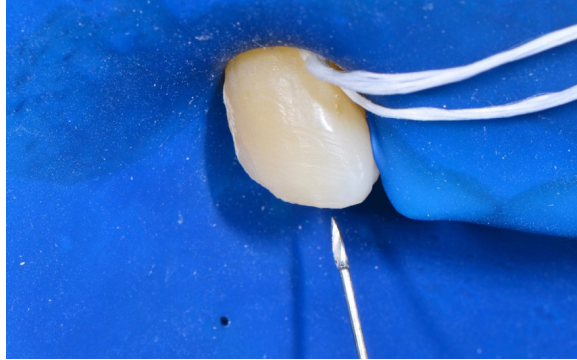
12 – Tooth 13 prior to sealing of Exacto post



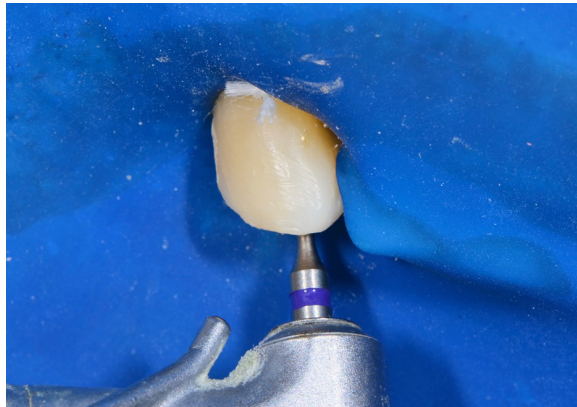
13 – Gutta-percha removal with Gates Bur and canal preparation with Largo Bur



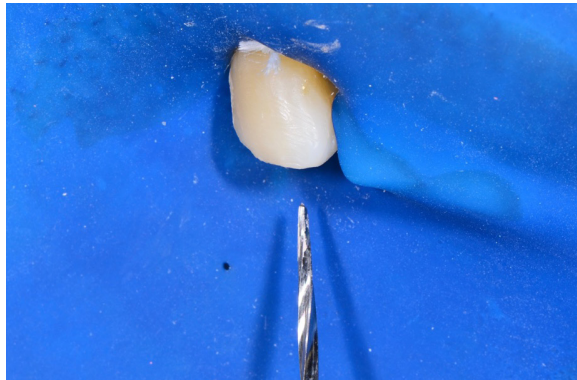
14 – Gutta-percha removal with Gates Bur and canal preparation with Largo Bur



15 – Preparation of the canal with a bur from Exacto Post Kit



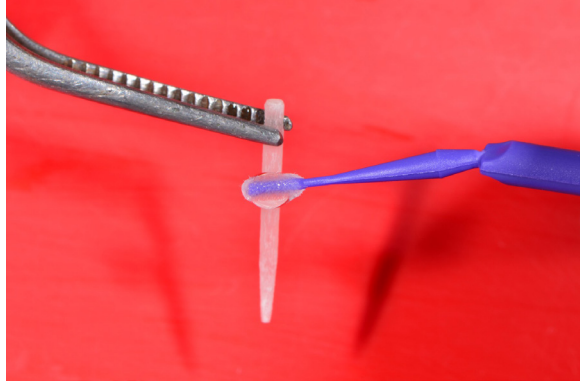
16 – Preparation of the canal with a bur from Exacto Post Kit



17 – Exacto post being tested in position



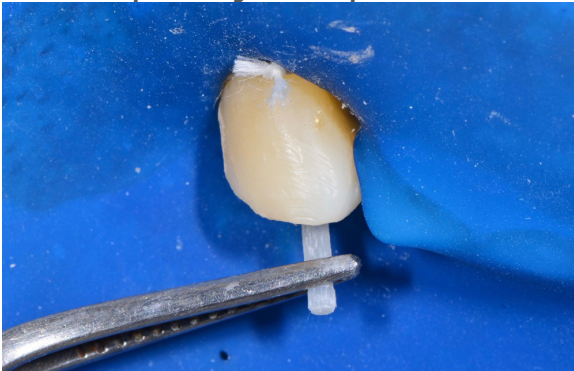
19 – Post being treated with Silane



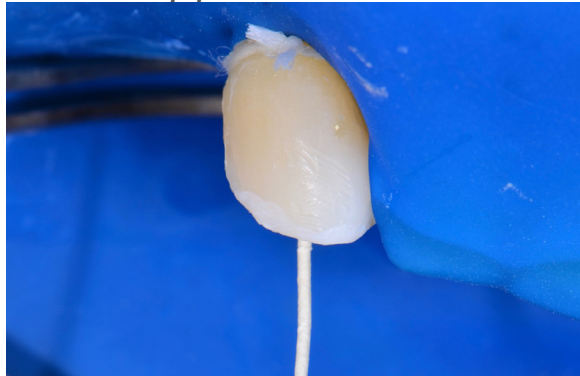
20 – Tooth etching with phosphoric acid



18 – Exacto post being tested in position



21 – Further drying of the canal with absorbent paper cone



22 – Application of Fusion Duralink Primer



26 – Filling core performed with composite resin



23 – Application of Fusion Duralink Catalyst



27 – Final aspect of the case with facet on element 11 and contact lens on element 12, and fixed prosthesis from 13 to 16 already sealed



24 – Resin cement already inside the canal and post in position



28 – Final aspect of the case



25 – Filling core performed with composite resin



29 – Final aspect of the case

