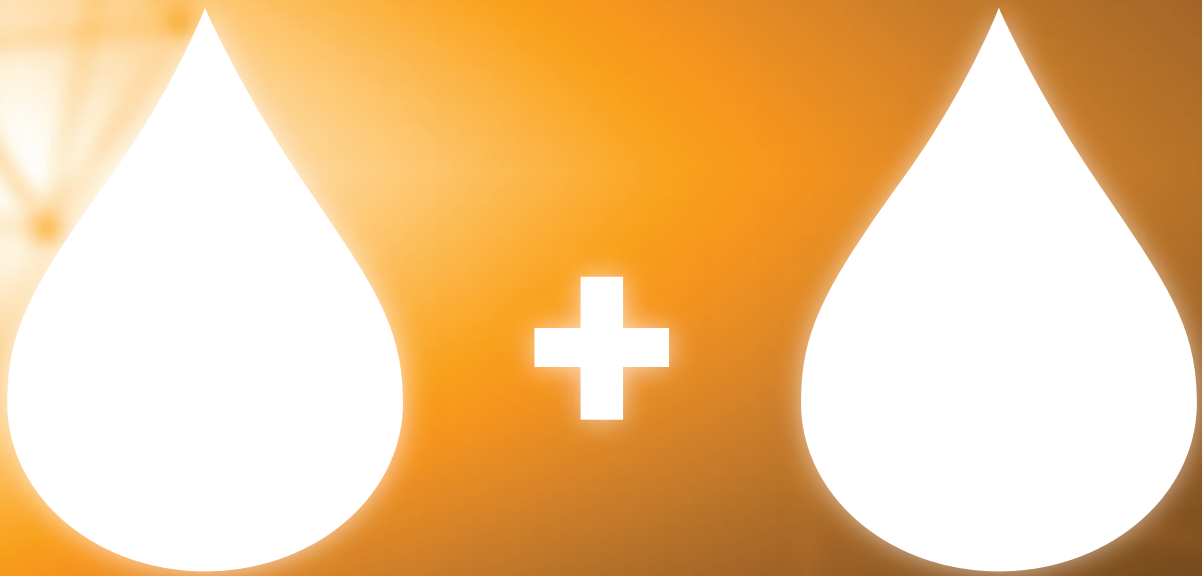


# MTA-Fillapex

Bioceramic root canal sealer





# Summary

1. GENERAL INFORMATION.....	04
1.1. General considering about endodontic sealers.....	04
1.2. MTA-Fillapex.....	05
2. COMPOSITION.....	06
3. PRESENTATION.....	06
4. INDICATIONS.....	07
5. PHYSICAL, CHEMICAL AND BIOLOGICAL PROPERTIES.....	08
5.1. Manipulation and insertion.....	08
5.2. Sealing of root canals.....	08
5.2.1. Flow.....	08
5.2.2. Film thickness.....	09
5.3. Dimensional change.....	10
5.4. Solubility.....	12
5.5. Antimicrobial action.....	13
5.6. Ease of removal.....	13
5.7. Radiopacity.....	14
5.8. Biocompatibility.....	15
5.9. Working and setting time.....	16
5.9.1. Working time.....	16
5.9.2. Setting time.....	17
5.9.3. Complexation reaction.....	18
6. CLINICAL EVALUATION.....	19
7. TECHNIQUE FOR USE.....	20
8. PUBLICATIONS.....	21

# 1. GENERAL INFORMATION

## 1.1. General considering about endodontic sealers

Since ancient times there is a concern of dental professionals in relation to root canal filling. The science of Endodontics has been continuously seeking to improve the knowledge and performance of endodontic sealers, as well as other materials and instruments used in this specialty field. The aim of filling a root canal is to keep the periapical tissues healthy. McElroy in 1955 had already described many substances that were used for filling root canals. With the evolution of research, new materials became available in the market for root canal filling.

According to GROSSMAN (1974), root canal filling materials must have the following properties:

- A. It should be easily introduce inside the root canal.**
- B. It should seal the whole root canal system, including lateral and accessory canals.**
- C. Once inserted, it should not shrink.**
- D. It should be impervious to moisture.**
- E. It should be antimicrobial or, at least, unsuitable for microbial growth.**
- F. It should be radiopaque.**
- G. It should not stain the tooth structure.**
- H. It should be sterile or capable of being easily and quickly sterilized.**
- I. It should not irritate the periapical tissues.**
- J. If necessary, it should be easy to remove.**

Being established the ideal profile of a filling material, it is possible to point the ideal parameters for research and development of new products, as well as the evaluation of those already on the market.

## 1.2. MTA-Fillapex

MTA-Fillapex is an bioceramic endodontic sealer based on MTA, developed by Angelus (Londrina/Parana/Brazil) and launched commercially in 2010. It is a new product that combines the proven advantages of MTA with a superior canal obturation product. Its formulation in the paste/paste system allows a complete filling of the entire root canal, including accessory and lateral canals.

MTA, present in the composition of MTA-Fillapex, is more stable than calcium hydroxide, providing constant release of calcium ions for the tissues and maintaining a pH which elicits antibacterial effects. The product is eugenol free and will not interfere with adhesive procedures inside the root canal. Also, it does not cause discoloration of the tooth structure.

### MAIN FEATURES AND ADVANTAGES

- A. **Biocompatible:** fast tissue recovery without causing inflammatory reactions;
- B. **High Radiopacity:** great radiographic visualization;
- C. **Excellent Flow:** allows filling of accessory canals;
- D. **Release of  $\text{Ca}^{2+}$ :** helps in the quickly recovery of bone and cementum formation;
- E. **Paste-to-Paste System:** easy to manipulate;
- F. **Adequate working time:** allows its use by endodontists and general practitioner;
- G. **Resin-Based:** easy to remove with gutta-percha solvents;

## 2. COMPOSITION

COMPONENT NAME	CHEMICAL NAME	FUNCTION
<b>PASTE A</b>		
Salicylate resin	Methyl Salicylate Butylene Glycol Colophony	Ionic polymer formation
Calcium Tungstate	Calcium Tungstate	Radiopacity
Silicon Oxide	Silicon Oxide	Filler
<b>PASTE B</b>		
Silicon Oxide Titanium Dioxide	Silicon Oxide Titanium Dioxide	Filler Pigment
Mineral Trioxide Aggregate	Tricalcium silicate Dicalcium Silicate Calcium Oxide Tricalcium Aluminate	Active ingredient and responsible for ionic polymer formation
Base resin	Pentaerythritol Rosinate P - Toluenesulfonamide	Plasticity  Plasticity

## 3. PRESENTATION

The product is presented in dual syringes with automix tips or in tubes.



Syringe with automix tip - 4g

or

Syringe with automix intracanal tip - 4g



Base paste tube - 18g  
Catalyst paste tube - 12g

or

Base paste tube - 7,2g  
Catalyst paste tube - 4,8g

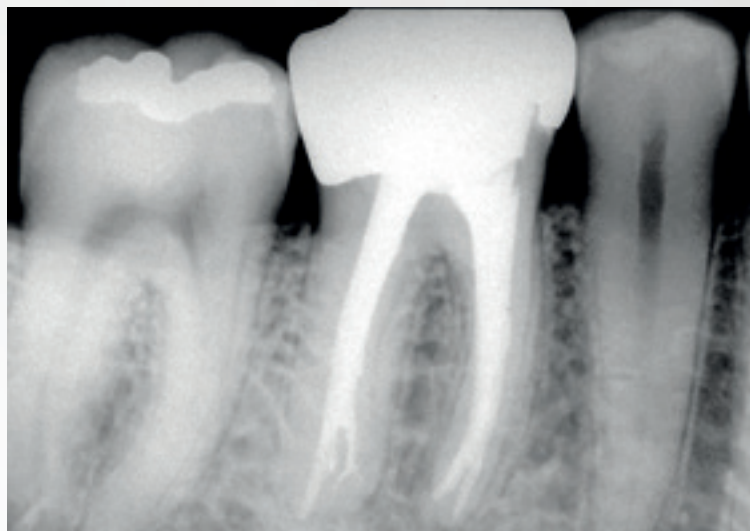
### PRESENTATIONS

826	Tubes (30g) packing with 1 tube of base paste (18g), 1 tube of catalyst paste (12g) and 1 mixing block.
827	Syringe (4g) packing with 1 syringe (4g), 15 self-mixing tips and 1 mixing block.
8288	Tubes (12g) packing with 1 tube of base paste (7,2g), 1 tube of catalyst paste (4,8g) and 1 mixing block; 158 - Pack with 10 automixing tips.
8270	Syringe (4g) packing with 1 syringe (4g), 15 intracanal self-mixing tips and 1 mixing block.



## 4. INDICATIONS

MTA-Fillapex is intended for permanent sealing of root canals in combination with gutta-percha cones.



Root canal filling performed with MTA-Fillapex. (Ramos, CAS et al 2011)

### CONTRAINDICATION

In patients with hypersensitivity against the resins or other components of the product.

In perforations, resorption sites and apical plugs (these cases must be filled with MTA Reparative Cement (Angelus MTA)).



## 5. PHYSICAL, CHEMICAL AND BIOLOGICAL PROPERTIES

### 5.1. Manipulation and insertion

The MTA-Fillapex is paste/paste material presented in automix double syringes or tubes which provide an adequate consistency for the cement insertion in the root canal.

### 5.2. Sealing of root canals

MTA-Fillapex shows an optimized flow. It provides excellent filling and sealing of the canals, main and lateral, as shown below.

#### 5.2.1. Flow ISO 6876:2012 Test



(SANTIAGO, GC, 2011)

1. A total of 5 samples were prepared for MTA-FILLAPEX. The base and catalyst pastes of MTA-FILLAPEX were dispensed in equal proportion on a glass plate, mixed for 60 seconds.
2. Approximately 0.05 ml of the mixture was dispensed between two glass plates (40x40mm). A 100 g weight was applied on the second plate.
3. Five determinations were accomplished for each sample in order to determine the extent of flow of the material.

#### Results:

SAMPLES	FLOW (millimeters)
1	24.74
2	24.72
3	25.18
<b>Average</b>	<b>24.88</b>
<b>SD</b>	<b>0.26</b>

**Conclusion:** Each disc had a diameter above the minimal required of 17 mm by ISO 6876:2012.\*



### 5.2.2. Film Thickness ISO 6876:2012 Test

1. A total of 3 samples were prepared. The catalyst and base paste of MTA-FILLAPEX was dispensed in equal proportion in a glass plate and mixed for 60 seconds.
2. A portion of the sample was applied onto the center of a glass slab. A second glass slab was placed centrally on the sealer. Finally, a weight of 150+-3N (15 Kg) was applied on the center of the plate;
3. After one minute from the start of the mixing, a load of 15 N was carefully applied vertically on the top of the slab.
4. The thickness of the film was measured using a micrometer.

**Results:** MTA-FILLAPEX presented film thickness of 15.00 ( $\pm$  2.65)  $\mu$ m, as can be seen in the Table below.

SAMPLES	FILM THICKNESS (MICROMETERS)
1	16.00
2	17.00
3	12.00
<b>Average</b>	<b>15.00</b>
<b>SD</b>	<b>2.65</b>

Average film thickness: 15  $\mu$ m

Standard Deviation film thickness: 2.65  $\mu$ m

**Conclusion:** MTA-FILLAPEX presented film thickness of 15.00  $\pm$  2.65  $\mu$ m. As expected, film thickness of MTA-FILLAPEX, determined in accordance with EN ISO 6876:2012, did not exceed 50  $\mu$ m.\*

### 5.3. Dimensional Change ISO 6876:2001 Test

The MTA-Fillapex, unlike resin cements, presents an important characteristic required by the sealing materials, which is the setting expansion.

1. 2g of MTA-Fillapex were prepared with 0.02 ml of water and dispensed into a mold to obtain three samples;
2. Two glass plates were pressed up on both surfaces of the mold containing the material. The glass plates were fixed with the aid of a device for stabilization;
3. After 5 minutes, the mold was taken to a relative humidity chamber of 95 % to 100% and later placed in dry heat at 37°C to reach the setting time (2h 20min);
4. Setting was confirmed by surface indentation with a Gilmore needle until the sample did not present any visible marks;
5. The samples were polished with 600 grit sandpaper;
6. The samples were measured;
7. These samples were placed in distilled water and in dry heat at 37°C;
8. Thirty days later, the samples were measured again.

#### Results:

Table Measurements before dimensional change testing

SPECIMEN	MEASURE (mm)
1	13.261
2	13.382
3	13.363

Table Measurements after dimensional change testing

SPECIMEN	MEASURE (mm)
1	13.280
2	13.379
3	13.363

The values obtained before and after dimensional changes testing were calculated in percentage to obtain the value of dimensional change for each sample.

Sample 1 - showed 0.1% expansion

Sample 2 - showed 0.022% shrinkage

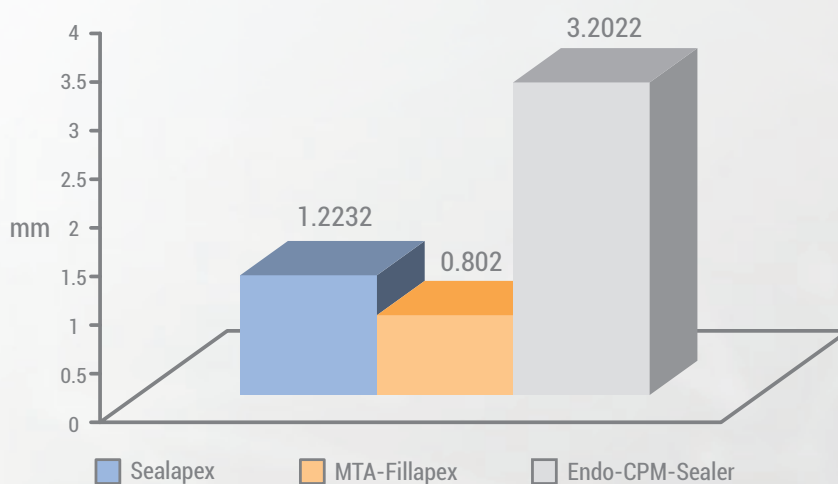
Sample 3 - showed 0.022% expansion

Average overall dimensional change (from 3 specimens ) = 0.088%

**Conclusion:** ISO sets that the average dimensional change of the material should not exceed 1.0% shrinkage or 0.1% expansion. Thus it is concluded that the material fulfilled the requirements standardized by ISO, considering each sample individually, as well as the average change in the material adding all samples tested.\*

The setting expansion of the material decreases apical leakage, as demonstrated by the work below:

Average results of apical leakage



IN VITRO EVALUATION OF APICAL LEAKAGE OF ENDODONTICS CEMENTS: MTA-Fillapex®, ENDO-CPM-SEALER® E SEALAPEX®. Moreira J.V, Gomes Filho, J.E., Watanabe,S, Rodrigues, G.B. – Campus de Araçatuba – Faculdade de Odontologia de Araçatuba – 2010.

## 5.4. Solubility

The solubility test was performed in 3 samples according to test ISO 6876:2012.

### Results:

SPECIMEN	MTA-FILLAPEX (%)
1	0,10
2	0,05
3	0,05
<b>Average</b>	<b>0,07</b>
<b>SD</b>	<b>0,03</b>

MTA-FILLAPEX presented solubility of 0,07 ( $\pm$  0,03) %, as can be seen in Table 04. The specimens showed no disintegration when observed visually.

**Conclusion:** MTA-FILLAPEX presented solubility of 0,07 ( $\pm$  0,03) %. As expected, the solubility was determined in accordance with EN ISO 6876:2012, did not exceed 3% by mass and show no disintegration, when observed visually.

## 5.5. Antimicrobial Action

The use of materials that provide high alkalinity favors hard tissue mineralization as well as offers good antimicrobial activity. MTA-based sealers present alkaline pH and high calcium ion releasing (KUGA,MC, 2011).

Mean and standard deviation  
of the pH regarding to the analysis time period

TIME PERIOD	MTA FILLAPEX
24 hours	9.39 (0.30)
7 days	7.68 (0.23)
14 days	8.89 (0.54)

Mean concentration and standard deviation of  
calcium releasing regarding to analysis time period

TIME PERIOD	MTA FILLAPEX
24 hours	9.15 (4.03)
7 days	8.95 (2.43)
14 days	9.68 (3.00)

## 5.6. Ease of removal

MTA-Fillapex can be removed with chemical or mechanical intervention or a combination of both. Solvents based on citrus oils and chloroform substances can be used.

Research on removal of lateral condensation root canal fillings with files and eucalyptol has shown that MTA-Fillapex is easier to remove than other cements (AH Plus, Sealapex, Real Seal e Endofill) (SANTOS , LGP, 2011).

## 5.7. Radiopacity ISO 6876:2012 Test

1. MTA-Fillapex was mixed according to the manufacturer's instructions and placed in the mold.
2. The covers on the top and bottom were pressed to make a 1mm thick sample.
3. The sample was placed in the center of an X-ray film adjacent to the step wedge.
4. The system was irradiated in accordance with ISO 6876:2012.
5. After developing, fixing and drying the exposed film, the densities of the image of the sample and the step wedge were compared using Image J.
6. The results were expressed in millimeters of aluminum.

### Results:

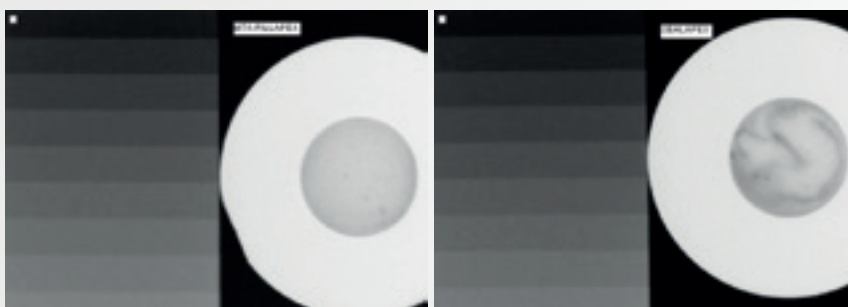


Figure with X-ray images of MTA-Fillapex and Sealapex compared to the aluminum scale



X-ray after the use of Fillapex in extracted roots.

MTA-FILLAPEX presented radiopacity of 4-5 mm compared to Al scale

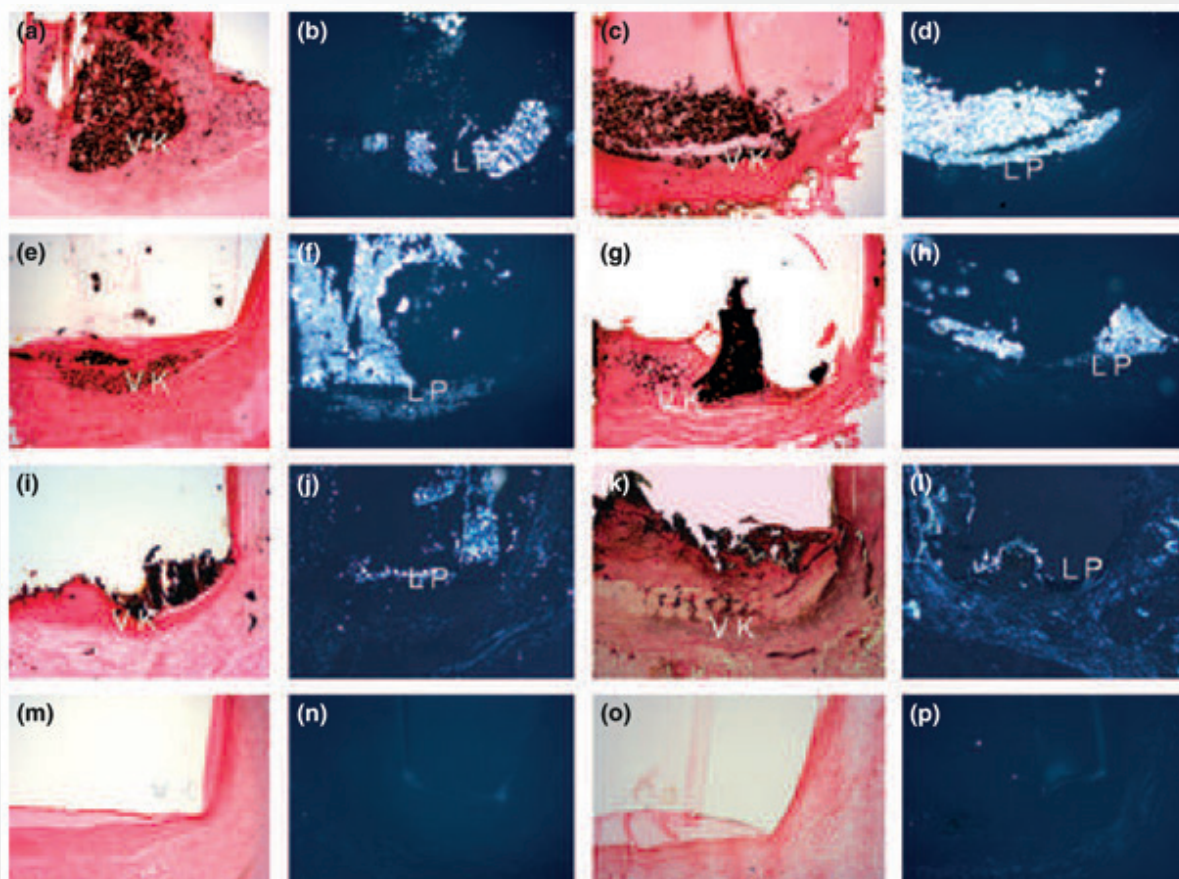
**Conclusion:** MTA-FILLAPEX is in accordance with EN ISO 6876 (2012), presenting radiopacity greater than 3 mm.



## 5.8. Biocompatibility

The biological properties inherent to conventional MTA used for treatment of root perforations replicates in MTA-Fillapex. When in contact with water, CaO can be converted into  $\text{Ca(OH)}_2$  and dissociated into  $\text{Ca}^{+2}$  and OH. The diffusion of hydroxyl ions from the root canal increases the pH at the surface of the root adjacent to the periodontal tissues, possibly interfering with osteoclastic activity and promoting alkalization in the adjacent tissues, which favors healing. Calcium ions participate in the activation of calcium-dependent adenosine triphosphatase and react with carbonic gas to form calcium carbonate crystals (birefringent to polarized light), which serve as a nucleus for calcification and favor mineralization. A rich extracellular network of fibronectin in close contact with these crystals strongly supports the role of calcite crystals and fibronectin as an initiating step in the formation of a hard tissue. Calcium is also needed for cell migration and differentiation. Because MTA-Fillapex and MTA have similar chemical composition and elicit similar tissue reactions, it is expected that MTA-Fillapex will act similarly to MTA when used in clinical situations, but be easier to handle because of its paste/paste presentation.

MTA-Fillapex is considered a great material for root canal treatment. MTA-Fillapex clearly shows the ability to stimulate nucleation sites for the formation of apatite crystals in human osteoblast-like cell culture.



After 30 and 90 days, note the presence of dystrophic calcification on the tube opening with Sealapex® (a,c, respectively), FILLAPEX® (e,g), Angelus MTA® (i,k), but not with Control (m,o). Von Kossa 100x. After 30 and 90 days, observe the presence of birefringent structures to polarized light, confirming the mineralization induction with Sealapex® (b,d, respectively), FILLAPEX® (f,h), Angelus MTA (j,l), but not with Control (n,p). Polarized light 100x. Rat tissue reaction to MTA-Fillapex - Dental Traumatology 2011; doi: 10.1111/j.1600-9657.2011.01096. Gomes-Filho, J.E ET al Department of Endodontics, Aracatuba School of Dentistry, University of Estadual Paulista, São Paulo, Brazil

## 5.9 Working Time and Setting Time

### 5.9.1 Working time Test ISO 6876:2012

1. The catalyst and base paste of MTA-FILLAPEX was dispensed in equal proportion in a glass plate and mixed for 60 seconds.
2. Approximately 0.05 ml (0,087 g) of the homogeneous moisture was dispensed between two glass plates (40x40mm).
3. The load (1,5 N) was applied 15 seconds before the working time of 23 minutes (stated by the manufacturer), finishes.
4. The weight was removed, and the diameter of compress disc formed was measured.
5. The diameter should not less than 17,00 mm 15 s before the end of working time.

**Results:** MTA-FILLAPEX presented flow, 15 seconds before the end of working time, of 24.88 ( $\pm 0.26$ ) mm, as can be seen in the Table below .

SAMPLES	FLOW (millimeters)
1	24.74
2	24.72
3	25.18
<b>Average</b>	<b>24.88</b>
<b>SD</b>	<b>0.26</b>

**Conclusion:** MTA-FILLAPEX meets the requirements of EN ISO 6876 (2012), presenting flow higher than 17 mm, confirming the manufacturer's working time specification of 23 minutes. \*

### 5.9.2. Setting Time Test ISO 6876:2012.

1. Three samples of the MTA-FILLAPEX material were prepared. The catalyst and base paste of MTA-FILLAPEX was dispensed in equal proportion in a glass plate and mixed for 60 seconds.
2. As the material needs to come into contact with moisture to set, gypsum molding (according to ISO 6873 Type 2) was used.
3. The plaster cast was maintained in a climatic chamber at  $(37 \pm 1 \text{ oC})$  and 95% U.R for 24 hours.
4. After this time, the cavity in the pre-conditioned plaster cast was filled with the material.
5. In a second moment, the set was stored in a climatic chamber at  $(37 \pm 1 \text{ oC})$  and 95% of U.R for a certain time.

**Results:** MTA-FILLAPEX presented setting time 100 ( $\pm 35$ ) minutes (Table below).

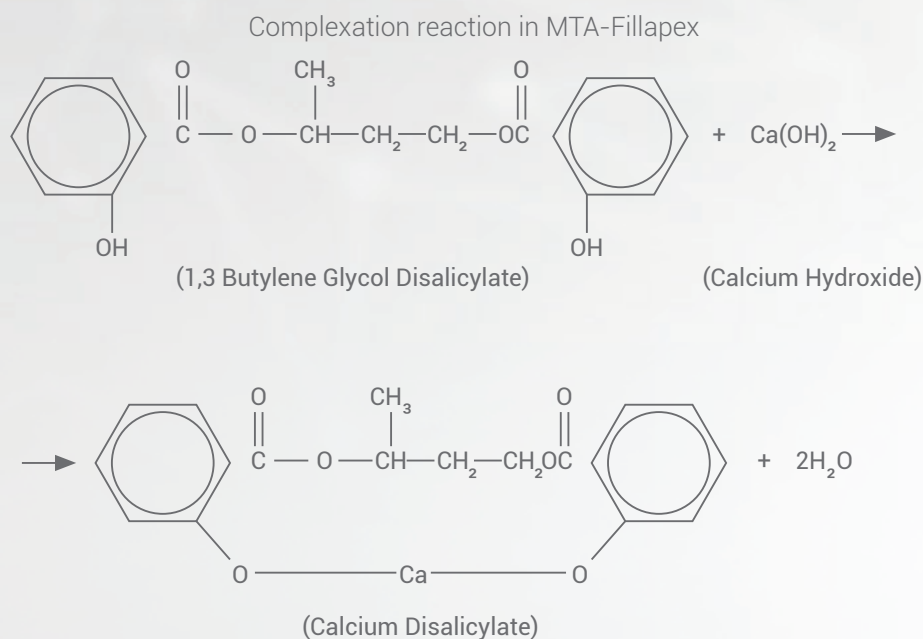
SAMPLES	SETTING TIME (minutes)
1	120
2	120
36	0
<b>Average</b>	<b>100</b>
<b>SD</b>	<b>35</b>

**Conclusion:** MTA-FILLAPEX complies with the acceptance criteria established for the product manufacturer (until 150 minutes) and meets the EN ISO 6876 (2012) requirements, presenting setting time in 100 ( $\pm 35$ ) minutes.\*

### 5.9.3. Complexation Reaction

For the understanding of the chemical process that provides the setting of MTA-Fillapex, it is necessary to understand the complexation reaction.

Complexation is an electrostatic attraction between an ion and a chelating agent so that occurs no electron transfer between them. In this process the final structure will charge the sum of the individual charges for each participant of the complex.



H. R. Stanley, T. Lundy: Dycal therapy for pulp exposures, Oral Surg. Vol. 34 Number 5: 818-827, 1972.

The chemical reaction that promotes setting in MTA-Fillapex is not a polymerization reaction between pastes but a complexation reaction.

The complexation reaction is an autocatalytic process. To get started, there must be a molecule of water from the external medium which, when forming the first complex, promotes a chain reaction and a new water molecule is generated (acid reaction + base = salt + water). Therefore the reaction has an intrinsic process of self-acceleration. The complexation reaction is also a chelation reaction where  $\text{Ca}(\text{OH})_2$  contacts the disalicylate resin, resulting in the entrapment of calcium ions in the compound.

Therefore, for this reaction, besides the salicylate, another component is fundamental:  $\text{Ca}(\text{OH})_2$ . The major source of  $\text{Ca}(\text{OH})_2$  responsible for the MTA-Fillapex reaction is from the hydration of free  $\text{CaO}$  which is in a high concentration in the formula.

It is therefore concluded that the moisture present in the dentin tubules hydrates free  $\text{CaO}$ , forming  $\text{Ca}(\text{OH})_2$  which will react with the salicylate and promote the setting.



## 6. CLINICAL EVALUATION

Clinical studies with MTA-Fillapex demonstrated the absence of post-operative pain after a short period of time, in different clinical situations, as shown below:

Post-op in different periods of time (%)  
MTA-Fillapex single visit (126 cases)  
Irreversible pulpitis with painful symptoms

	IMMEDIATE	24 HOURS	72 HOURS	1 WEEK
Without pain	66%	84%	98%	100%
Moderate pain	24%	12%	2%	
Severe pain	10%	4%		

Internal clinical data compiled from the Dental Clinic of the Universidade Estadual de Londrina (UEL).

Post-op in different periods of time (%)  
MTA-Fillapex single visit (84 cases)  
Necrosis without painful symptoms

	IMMEDIATE	24 HOURS	72 HOURS	1 WEEK
Without pain	84%	92%	98%	100%
Moderate pain	16%	8%	2%	
Severe pain				

Internal clinical data compiled from the Dental Clinic of the Universidade Estadual de Londrina (UEL).

Quick recovery of pre-existing periapical lesions (before endodontic treatment) has also been observed after use of MTA-Fillapex.



Clinical case with MTA-Fillapex: Initial RX (Photo 1), 4 months P.O (Photo 2) 14 months P.O (Photo 3) (SELLERA, D.P, 2011).

## 7. TECHNIQUE FOR USE

1. **Root canal preparation:** Prior to insertion of MTA-FILLAPEX, the root canal should be prepared and cleaned according to the selected endodontic technique. The device requires an isolated dry field; therefore, moisture found in the canal or in the ambient humidity is sufficient to initiate MTA-FILLAPEX hardening;
2. **Mixing:**
  - **Dual syringe:** The dual syringe ensures equal mixing in a 1:1 ratio. Press plunger to extrude material directly onto a glass slab, mixing pad or into the tooth canal. The cement should be used immediately after mixing;
  - **Tubes:** Mix equal volume units (1:1). Mix for 30 seconds to a homogeneous consistency;
3. **Insertion:** Use MTA-FILLAPEX with gutta-percha or silver points, coating them with a thin layer of the cement and filling the root canal according to the selected technique. MTA-FILLAPEX can be applied in the root canal with a Lentulo spiral or, directly, with an applicator tip adapted to the self-mixing tip;

**ATTENTION:** *The auto-mixing tip or the intracanal applicator mixing tip must be discarded after use in accordance with national laws and local authorities' recommendations for proper disposal.*

4. Take a radiograph for control.

### WARNINGS

- Contact with eyes or skin: you must avoid contact of both the separate and already mixed pastes with eyes or skin. In case of accidental contact, wash abundantly with water;
- Avoid contact with oral mucosa. In case of contact, rinse with water and avoid ingesting the product. If any sensitivity persists, seek medical attention immediately.

### PRECAUTIONS

- During the use of this product, it is recommended the patient and professional use suitable protective clothing, eye protection and gloves
- Use the product only after controlling the infection or the material will not function correctly due to the acidic pH of the environment;
- Ensure that the covers of the base and catalyst pastes are not interchanged, because replacing them



- incorrectly can cause the hardening of the product inside the tube;
- If the syringe is contaminated with saliva or blood during the application, dispose of the syringe and do not use it on other patients;
- The syringe and tube must be cleaned immediately after use with alcohol and instruments must be sterilized;
- Federal law restricts the sale of this medical device only to dental surgeons.

### STORAGE

- Keep in dry and cool place, away from humidity and sources of heat.
- Do not store in the refrigerator.
- Keep the product tightly capped.

### DISPOSAL METHOD

- The product must be disposed of in accordance with local regulations.

## 8. PUBLICATIONS

1. ASSMAN, E. Avaliação da resistência de união à dentina dos cimentos à base de MTA e à base de resina epóxica através do teste de micropush out; Trabalho de Conclusão de Curso de Especialização de Endodontia da Universidade Federal do Rio Grande do Sul; 2010
2. ASSMAN, E.; ET AL. Dentin Bond Strength of Two Mineral Trioxide Aggregate–based and One Epoxy Resin–based Sealers; JOE – Volume 38, Number 2, February 2012
3. AZNAR, F.D.C.T. Tratamento de reabsorção interna empregando cimento endodôntico à base de MTA: Relato de Caso Clínico. Angelus. 2015
4. BALDISSERA, R.S. Avaliação da penetrabilidade dentinária apical dos cimentos AH Plus e MTA Fillapex por meio da microscopia confocal. Trabalho de conclusão de especialização. Universidade Federal do Rio Grande do Sul. Faculdade de Odontologia. Curso de Especialização em Endodontia <<http://hdl.handle.net/10183/79931>. 2015>
5. BIN C V; VALERA M C, CAMARGO S E A, RABELO S B, SILVA G O, BALDUCCI I, CAMARGO C H R, Cytotoxicity and Genotoxicity of Root Canal Sealers Based on Mineral Trioxide Aggregate Endod 2012;38:495–500
6. BORGES, A.H.; ET AL. Analysis of Chemical Elements and Heavy Metals in MTA Fillapex and AH Plus. OHDM - Vol. 13 - No. 4 - December, 2014
7. BORGES, A.H.; et al. Arsenic Release of Portland and MTA-Based Cements. IADR

Thursday, March 21, 2013

8. BORGES, R.P., Avaliação da solubilidade de cimentos obturadores dos canais radiculares à base de silicato de cálcio – Tese de Doutorado da Universidade de Ribeirão Preto (UNAERP), área de concentração Endodontia, Ribeirão Preto, 2011
9. BRAIT, A H, Cirurgia paraendodôntica com retroinstrumentação ultrassônica e retrobturação com Fillapex/MTA [http://4.bp.blogspot.com/\\_LAB40W-pjXk/TBy8kPflw6I/AAAAAAAAAXM/aAUNlx2GC5s/s1600/Slide1.JPG](http://4.bp.blogspot.com/_LAB40W-pjXk/TBy8kPflw6I/AAAAAAAAAXM/aAUNlx2GC5s/s1600/Slide1.JPG)
10. BRAUN, A.; ET AL. Germ reduction during endodontic treatment of a geminated tooth with a 970 nm laser. International magazine of laser dentistry. august 2013
11. BROOM, N.J.; ET AL. Reparacion de periodontitis apical crónica con cemento sellador MTA Fillapex en una sesion. Endoodncia Actual. Noviembre 2012, vol VII. N.3
12. BROOM, N.J.; ET AL. Reparación expectante de lesiones periapicales de origen endodóntico con cemento MTA-Fill-Apex en una sola cita. Endodoncia • Volumen 31 • Número 2 • Abril-Junio 2013
13. CAMILLERI, J. ET AL. Sealers and Warm Gutta-percha Obturation Techniques. JOE – Volume 41, Number 1, January 2015
14. CARVALHO, V.H.M.; ET AL. Comparação de métodos radiográficos para determinação da radiopacidade de cimentos endodônticos. Braz Oral Res 2015
15. CASTRO, V.L.D. Análise comparativa entre dois sistemas dosadores do cimento MTA Fillapex®. Monografia apresentada ao Curso de Especialização da Faculdade São Leopoldo Mandic, Belo Horizonte MG, para obtenção do título de Especialista em Endodontia. BELO HORIZONTE, 2012
16. CEHELLA, B.C. Influência Da Exposição Do Biodentine Ao Tampão Fosfato-Salino Sobre O Selamento Apical E A Resistência De União À Dentina (Push-Out). Dissertação submetida ao Programa de Pós-Graduação em Odontologia da Universidade Federal de Santa Catarina para a obtenção do Grau de Mestre em Odontologia. Área de concentração: Endodontia Florianópolis 2014
17. COLLARES KF, CAMARGO-JUNIOR AS, KNABACH CB, OLIVEIRA LP, JARDIM PS, JACINTO RC Influência de cimento endodôntico a base de MTA na resistência de união de pinos de fibra de vidro Brazilian Oral Rearch, Pie015, Volume 25 Supplement 1 September 2011
18. CORNÉLIO ALG, SALLES LP, ROSSA-JUNIOR C, GUERREIRO-TANOMARU JM, TANOMARU-FILHO M Biocompatibilidade e bioatividade do MTA-Fillapex em cultura de células ósseas humanas, Brazilian Oral Rearch,PNf 016, Volume 25 Supplement 1 September 2011
19. COSTA CCR, ROCHA VGN, HABITANTE SM, RALDI DP, LAGE-MARQUES JL. Análise da infiltração apical de um novo cimento endodôntico a base de MTA. Cienc Odontol Bras 2009;12:35-40

20. CRISTOFAMO, A.S. ET AL. Ação Antimicrobiana De Um Cimento Endodôntico À Base De Silicato De Cálcio Sobre Dois Tipos Bacterianos. Anais Da 21a. Jornada Acadêmica De Odontologia Da Universidade Do Oeste Paulista – Unoeste 03 A 07 De Novembro Presidente Prudente – SP\_ 2014
21. CRUZ, ATG. Influência do hidróxido de cálcio na penetração dos cimentos AH Plus E MTA Fillapex nos túbulos dentinários. Braz Oral Res 2014;28 (Suppl. 1)
22. CUNHA RAG, ROMAGNOLI C, BERGER SB, GUIRALDO RD, MOURA SK, CARVALHO RV, COSTA JM, LOPES MB Propriedades físicas de cimento a base de MTA. Brazilian Oral Research, Plc071 Volume 25 Supplement 1 September 2011
23. DU, T.; ET AL. Combined Antibacterial Effect of Sodium Hypochlorite and Root Canal Sealers against Enterococcus faecalis Biofilms in Dentin Canals. JOE – Volume 41, Number 8, August 2015
24. EHSANI, M.; ET AL. Antimicrobial activity of three different endodontic sealers on the enterococcus faecalis and lactobacillus (in vitro). Caspian J Dent Res -September 2013, 2(2): 8-14
25. EHSANI, M.; ET AL. Evaluation of Apical Micro-leakage of Different Endodontic Sealers in the Presence and Absence of Moisture. J Dent Res Dent Clin Dent Prospects. 2014 Summer; 8(3): 125–129.
26. ELBAZ, A.A.; ET AL. Longitudinal Assessment of Biocompatibility and Healing Response of MTA Fillapex International Dental Journal 2013; 63 (Suppl. 2): 1--98. FDI World Dental Federation
27. FARAONI, G. ET AL. Avaliação comparativa do escoamento e tempo de presa do cimento MTA Fillapex® Comparative assessment of flow and setting time of the MTA
28. FARIA-JÚNIOR NB, TANOMARU-FILHO M, BERBERT FLCV, GUERREIRO-TANOMARU JM Atividade antimicrobiana de cimentos obturadores endodônticos sobre biofilme de Enterococcus faecalis Brazilian Oral Research, PNe036Volume 25 , Supplement 1 September 2011
29. FELIPPE, G.S. Capacidade De Promover Biomineralização De Diferentes Bioagregados: Análise In Vivo. Dissertação apresentada ao Programa de Pós-Graduação em Odontologia, da Universidade Federal de Santa Catarina, como parte dos requisitos para obtenção do título de Mestre em Odontologia. Área de concentração: Endodontia. 2012
30. FERINO, R.V; TANOMARU-FILHO,M.; SILVA,G.F; SASSO-CERRI,E. GUERREIRO-TANOMARU, J.M;CERRI, P.S. Evaluation of a MTA-based sealer histocompatibility in subcutaneous tissue 721 Thursday, June 21, 2012: 11:45 a.m. - 1 p.m IADR 2012
31. FERREIRA, M.M. ET AL. Comparison of the apical seal on filled root canals with Topseal® vs MTA Fillapex® sealers: A quantitative scintigraphic analysis. Open Journal of Stomatology, 2013, 3, 128-132

32. Fillapex™ sealer. RFO, Passo Fundo, v. 18, n. 2, p. 180-184, maio/ago. 2013
33. FINGER, M.S.; et al. Comparative evaluation of pH and solubility of MTA Fillapex® endodontic sealer. RSBO. 2014 Jan-Mar;11(1):41-6
34. FREITAS, C.G.; ET AL. Radiopacity of 4 cements obturators through the tomographic analysis; Rev. APCD ,2012. 66(1) 36-40
35. GLASSMANN, G. Bioactive endododontic obturation: Combining the new with the tried and true MTA Fillapex and Continuous Wave of Condensation; ROOTS, 3; 2013
36. GOMES FILHO, J E; Rat tissue reaction to MTA-Fillapex Dental Traumatology 2011; doi: 10.1111/j.1600-9657.2011.
37. GOMES FILHO, J. E.; et al. Effect of MTA-based sealer on the healing of periapical lesions. J Appl Oral Sci.2013;21(3):235-42
38. GOMES-FILHO J.E, MOREIRA J.V, WATANABE S., LODI C.S., CINTRA L.T.S, DEZAN JUNIOR, E., BERNABÉ P.F.E, NERY M.J, OTOBONI FILHO, J.A Sealability of MTA and calcium hydroxide containing Sealers. J Appl Oral Sci. 2012;20(3):347-51
39. GOMES-FILHO JE, WATANABE S, BERNABÉ PFE, COSTA MTM. A mineral trioxide aggregate sealer stimulated mineralization. Journal of Endodontics 35:256- 60 (2009)
40. GÜMRÜ, B.; ET AL. Evaluation of The Radiopacity of a MTA-Based Root-Canal Filling Material using Digital Radiography. Journal of Marmara University Institute of Health Sciences Volume: 3, Number: 1, 2013
41. IOANNIDIS, K.; ET AL. Spectrophotometric analysis of crown discoloration induced by MTA- and ZnOE-based sealers. J. Appl. Oral Sci. vol.21 no.2 Bauru Mar./Apr. 2013
42. KESKIN, S.; ET AL. Efficacy of Different Activation Regimes of Chitosan. International Dental Journal © 2013 FDI World Dental Federation
43. KUGA , M .C.; ET AL. Effects of calcium hydroxide addition on the physical and chemical properties of a calcium silicate-based sealer. J Appl Oral Sci. 2014 May-Jun; 22(3): 180–184
44. KUGA, M. C.; ET AL. Evaluation of the pH, calcium release and antibacterial activity of MTA Fillapex. Rev Odontol UNESP. 2013 Sept-Oct; 42(5): 330-335
45. KUGA,M.C. et al. Hydrogen ion and calcium releasing of MTA-Fillapex® and MTA-based formulations. RSBO. 2011 Jul-Sep;8(3):271-6
46. MACHADO, G.L.N. Estudo Comparativo Da Infiltração Apical Entre Um Cimento A Base De MTA E Um Cimento Resinoso. Monografia apresentada ao Programa de Especialização em Endodontia do ICS – FUN Ilhéus-BA, como parte dos requisitos para obtenção do título de Especialista. Ilhéus – BA, 2013
47. MADANI, Z .S.; ET AL. Comparative evaluation of antimicrobial activity of two root canal sealers: MTA Fillapex and AH26. Minerva Stomatol, 2014. 63; 1-2
48. MALKA, V.B. Radiopacidade de cimentos endodonticos: comparação entre dois



- métodos in vitro. Trabalho de conclusão de curso ( graduação). Universidade Federal do Rio Grande do Sul. Porto Alegre 2012
49. MARCIANO, M.A. Physical And Chemical Properties Of Experimental Portland-based Sealers Saturday, March 23, 2013: 2 p.m. - 3:15 p.m. Location: Hall 4 (Washington State Convention Center) IADR, MARCH, 2013
  50. MARCIANO, M.A.; ET AL. Alteração de cor de quatro cimentos obturadores de canais radiculares: análise por meio de espectrofotometria Color alteration of four root canal sealers: a spectrophotometer analysis. Full Dent. Sci. 2013; 5(17):221-225.
  51. MARQUES, N.C.T.; ET AL. Rat subcutaneous tissue response to MTA Fillapex® and Portland cement. Braz. Dent. J. vol.24 no.1 Ribeirão Preto 2013
  52. MEIRELLES VIDOTTO, A.p.; SANCHES CUNHA, R; GREGATTO ZEFERINO, E; GUIMARÃES P.R.D; SIGRIST DE MARTIN, A; DA SILVEIRA BUENO, C.E. Comparison of MTA-Fillapex radiopacity with five root canal sealers RSBO Revista Sul-Brasileira de Odontologia, vol. 8, núm. 4, outubro-diciembre, 2011, pp. 404-409
  53. MELO, T.A.F.; ET AL;. Filling analysis of artificial lateral canals after main canal obturation through three different endodontic sealers. RSBO. 2014 Oct-Dec;11(4):369-74
  54. MELO, W.O.S.; ET AL. Influência da adição de quitosana na radiopacidade do cimento endodôntico MTA FILLAPEX . Brazilian O. Research, 2015
  55. MOREIRA, J.V; GOMES-FIHO, J.E.; WATANABE, S. RODRIGUES, G.B. Avaliação in vitro da infiltração apical dos cimentos endodônticos: MTA-Fillapex®, Endo-CPM-Sealer® e Sealapex®. – Campus de Araçatuba – Faculdade de Odontologia de Araçatuba – Odontologia –2010
  56. MORENO, M.B.P. Avaliação de propriedades físico-químicas de cimentos endodônticos experimentais à base de MTA e salicilato modificados por cálcio. Braz Oral Res 2013
  57. MORGENTAL RD, VIER-PELISSER FV, OLIVEIRA SD, ANTUNES FC, COGO DM, KOPPER PM Avaliação da resistência de união à dentina dos cimentos à base de MTA e à base de resina epóxica, através do teste de micro push-out ,.; Antibacterial activity of two MTA-based root canal sealers. Int Endod J. 2011 Dec;44(12):1128-33
  58. MORGENTAL, R. D; et al. Antibacterial activity of two MTA-based root canal sealers. International Endodontic Journal, 44, 1128–1133, 2011
  59. MOTTA JUNIOR, A.G. Caracterização química de fases cristalográficas e físicas dos cimentos MTA-Fillapex, AH Plus, Sealer 26 e Endofill. Tese apresentada como requisito parcial para obtenção do título de Doutor, ao Programa de Pós-Graduação em Odontologia, da Universidade do estado do Rio de Janeiro. Área de concentração Endodontia. 2011.
  60. NAKAZOME, P.A.G.; ET AL. Propriedades físico-químicas e antibiofilme do MTA Fillapex associado à nanopartículas de óxido de cálcio ou de hidróxido de cálcio. Brazilian O. Research, 2015

61. NASCIMENTO, C.A; GUERREIRO TANOMARU,J.M; FARIA-JUNIOR,N.B; TANOMARU-FILHO,M. pH, Solubility and Antibacterial Activity Against Biofilm of Endodontic Sealers 164291 Friday, June 22, 2012: 11:45 a.m. - 1 p.m. IADR 2012
62. NES, F.C.; ET AL. Avaliação do pH e da atividade antibacteriana de cimentos à base de MTA. XII Salão de Iniciação Científica – PUCRS, 03 a 07 de outubro de 2011
63. NIKHIL,V.; ET AL. Effect of technique of sealer agitation on percentage and depth of MTA Fillapex sealer penetration: A comparative in-vitro study. J Conserv Dent. 2015 Mar-Apr; 18(2): 119–123
64. OZEROGLU. E.; ET AL. Comparison of Various Smear Layer Removal Techniques on push-out Bond Strength of MTA Fillapex. International Dental Journal 2013; 63 (Suppl. 1): 1--98
65. PEREIRA, L. Uma abordagem endodôntica contemporânea com o uso de cimento biocerâmico. SITE ANGELUS, 2015
66. PEREIRA. L.A.P.;BERTI,L.S.A. Abordaje y resolución exitosa de perforaciones radiculares: 3 experiencias clínicas. Canal Abierto Revista de la Sociedad de Endodoncia de Chile, N 32. Octubre 2015
67. PEREZ , J.A.T., BROOM, N.A.; ET AL. Respuesta inflamatoria de los cementos selladores: MTA Fillapex, Adseal y Roth en tejido subcutáneo de ratas. Revista Endodoncia Actual / Febrero- Mayo 2015/Vol . X. No.1. PP. 34-39
68. PORFIRIO R, MINOTTI PG, NUNES E, SILVEIRA FF, SOARES JA, MORAES IG, ORDINOLA-ZAPATA R, DUARTE MAH. Análise da solubilidade, pH e liberação de cálcio de quatro cimentos endodônticos. Brazilian Oral Research, Plb 010 Volume 25 , Supplement 1 September 2011
69. QUEIROZ FF, BRUM CBB, BRUM JR, SENA NT Estudo in vitro da atividade antimicrobiana de cimentos endodônticos frente ao Enterococcus faecalis Brazilian Oral Research, AO 012 - Volume 25 • Supplement 1 September 2011
70. RAWTIYA, M.; ET AL. MTA root canal sealers. JOFR, 2013 (3) 1, 16-21.
71. RESENDE, M. A. M. Estudo in vitro das propriedades físico-químicas, escoamento e tempo de presa do MTA-Fillapex em comparação com dois cimentos endodônticos: 2012. 58 f. Monografia (Graduação em Odontologia) - Centro Universitário de Lavras, Lavras, 2012
72. REVIEJO, M.; ET AL. Confocal Laser Scanning Microscope Study Of The Penetration Of Mta Fillapex And Ah-Plus Into Root Canal Dentinal Tubules. Conseuro, Pairs, 2013
73. REYHANI, M.F.; ETA L; Apical microleakage of AH plus and MTA Fillapex® sealers in association with immediate and delayed post space preparation: a bacterial leakage study. MINERVA STOMATOL 2015;64:1-2
74. RODRIGUES, R.L. Avaliação do efeito antimicrobiano de cimentos endodônticos associados ao óxido de zinco nanoparticulado. XXVI Congresso de Iniciação Científica. Faculdade de Odontologia de Araraquara – UNESP 2015



75. SADEGUI, S.; AKIBARI, A. Ex-vivo Apical Seal Comparison of Root Canal Obturation Using MTA Fillapex Versus MTA Orthograde. *Journal of Dentomaxillofacial Radiology, Pathology and Surgery* Vol 2, No 2, Summer 2013
76. SAĞSEN,B.; ÜSTÜN,Y.; PALA, K; DEMİRBUĞA, S. Resistance to fracture of roots filled with different sealers. *Dental Materials Journal* 2012; 31(4): 528–532SALLES LP, GOMES-CORNÉLIO AL, GUIMARÃES FC, HERRERA BS, BAO SN, ROSSA-JUNIOR C, GUERREIRO-TANOMARU JM, TANOMARU-FILHO M. Mineral trioxide aggregate-based endodontic sealer stimulates hydroxyapatite nucleation in human osteoblast-like cell culture. *J Endod.* 2012 Jul;38(7):971-6. Epub 2012 Apr 6.
77. SALLES,L.P;CORNÉLIO,A.L; GUERREIRO-TANOMARU J.M., TANOMARU-FILHO, M. Bioactivity of MTA-Fillapex in Human Osteoblast-Like Cells 882 Thursday, June 21, 2012: 11:45 a.m. - 1 p.m IADR 2012
78. SANTIAGO,G.C. Estudo comparativo “in vitro” de selamento apical utilizando as técnicas de Condensação Lateral e Híbrida de Tagger com os cimentos Pulp Canal Sealer e MTA-Fillapex - Monografia apresentada ao Curso de Especialização da Faculdade de Pós graduação FAISA/CIODONTO, Sete LagoasMG, como requisito parcial para obtenção do título de Especialista - Faculdade de Sete Lagoas, 2010.
79. SANTOS LGP, TEDESCO M, FELIPPE WT, FREITAS SFT, TEIXEIRA CS, BORTOLUZZI EA, FELIPPE MCS Retratamento endodôntico: Avaliação ex vivo da presença de remanescentes de diferentes materiais obturadores *Braslian Oral Reach*, PNe014, Volume 25 Supplement 1 September 2011
80. SANTOS, L.G.P. Difusão de íons hidroxila através da dentina radicular nos casos de retratamento endodôntico [dissertação] : estudo ex vivo. Dissertação apresentada ao Programa de Pós-Graduação em Odontologia da Universidade Federal de Santa Catarina como parte dos requisitos para a obtenção do título de Mestre em Odontologia. Área de concentração: Endodontia. Florianópolis, 2012
81. SCELZA, M.C, LINHARES A.B, DA SILVA L.E., J. GRANJEIRO, M. ALVES, G.G. A multiparametric assay to compare the cytotoxicity of endodontic sealers with primary human osteoblasts. *International Endodontic Journal*, 45, 12–18, 2012
82. SCHMITT, G. U. ; ET AL . Influências de cimentos endodônticos na resistência de união De pinos de fibra de vidro. XX Congresso de iniciação científica UFPEL - 2011
83. SCHMITT, G.U.; ET AL. Influencia De Cimentos Endodonticos Na Resistência De União De Pinos De Fibra De Vidro. XX congresso de iniciação científica UFPEL, 2011
84. SILVA, E.J.N.L.; ET AL.. Evaluation of Cytotoxicity and Physicochemical Properties of Calcium Silicate-based Endodontic Sealer MTA Fillapex. *JOE — Volume 39, Number 2, February 2013*
85. SILVA, P.A.M. Avaliação on vitro da capacidade seladora e da qualidade de obturação de quatro cimentos endodonticos utilizando a técnica de cone único. Dissertação apresentada para obtenção do título de Mestre em Ciências. Área de concentração de Endodontia. Bauru, 2013.
86. SILVA, R. S. F. et al. Análise histológica tecidual frente a um novo cimento endodôntico à base de MTA. São Paulo: *Braz. Oral. Res.* , 2006. p. 220 In: SBPQO 2006, Atibaia.

87. SPIRONELLI RAMOS, C.A. ET al. Tratamento endodôntico utilizando-se o MTA-Fillapex® como cimento obturador: relato de um caso clínico .Publicado em 14 de Março de 2011 Odontocase in: <<<http://www.odontocases.com.br/Cases/5/endodontia/61/tratamento-endodontico-utilizando-se-o-mta-fillapex®-como-cimento-obturador>>>
88. SPOSITO, O.S. Avaliação da dor pós-operatória em dentes com canais radiculares obturados com MTA Fillapex ou Endofill. Braz Oral Res 2013
89. SPOSITO, O.S.; et al. Avaliação da influência do cimento obturador na dor após o tratamento do canal radicular. XV ENPos. UFPEL.2011
90. TANOMARU-FILHO, M.; ET AL. Radiopacity and flow of different endodontic sealers. Acta odontol. latinoam. vol.26 no.2 Buenos Aires oct. 2013
91. TEIXEIRA, J.F.R.N. Revisão sobre os cimentos de obturação utilizados em Endodontia. Trabalho apresentado à Universidade Fernando Pessoa como parte dos requisitos para a obtenção do grau de Mestre em Medicina Dentária Universidade Fernando Pessoa, Porto,2014
92. TONINI, R.; et Al . La Microinfiltrazione Del Sigillo Apicale: Valutazioni Al Icroscopio Ottico Nel Confronto Tra Due Sistemi Di Otturazione Con Guttaperca Veicolata Da Carrier Associati A Tre Diversi Cementi Endodontici. Universita' Degli Studi Di Brescia Facolta' Di Medicina E Chirurgia Corso Di Laurea Specialistica In Odontoiatria E Protesi Dentaria ( 2013)
93. TYAGI, S.; ET AL. Evolution of root canal sealers: An insight story. European Journal of General Dentistry | Vol 2 | Issue 3 | September-December 2013 |
94. USTUN, Y.; ET AL. In vitro antimicrobial efficiency of different root canal sealers against *Enterococcus faecalis*. European Journal of General Dentistry | Vol 2 | Issue 2 | May-August 2013 |
95. UZUNOGLU,E.; ET AL. Retreatability of Root Canals Obturated Using Gutta-Percha with Bioceramic, MTA and Resin-Based Sealers. Iran Endod J. 2015; 10(2): 93–98. Published online 2015 Mar
96. VEDOVELLO, G.; KAMACHI,J. Caso de Retratamento com obturação do Cimento MTA-Fillapex - <http://eecampinas.blogspot.com.br/> 2011
97. VENÇÃO, A.C. Efeitos sobre as propriedades físico-químicas e atividade antimicrobiana de modificações na composição de um cimento contendo silicato de cálcio, Dissertação (Mestrado) – Universidade Estadual Paulista, Faculdade de Odontologia. Araraquara: [s.n.], 2014.
98. VIAPIANA R, BOSSO R, REIS JMSN, GUERREIRO-TANOMARU JM, TANOMARU-FILHO M Radiopacidade e escoamento dos cimentos endodônticos AH Plus, Endo CPM Sealer, Fillapex, Sealapex, Epiphany e Epiphany SE. Brazilian Oral Research,PNf026, Volume 25 Supplement 1 September 2011
99. VIDOTTO, A.P.M ET AL. Comparison of MTA Fillapex radiopacity with five root canal sealers : RSBO. 2011 Oct-Dec;8(4):404-9

100. VITTI, R.P. Avaliação do pH e liberação de cálcio de cimentos endodônticos experimentais à base de MTA e salicilato modificados por cálcio. Braz Oral Res 2013
101. VITTI, R.P. Estudo de cimentos comerciais e experimentais à base de MTA para obturação de canais radiculares. Tese (Doutorado) - Universidade Estadual de Campinas, Faculdade de Odontologia de Piracicaba. Piracicaba, SP : [s.n.], 2013.
102. VITTI, R.P.; ET AL. Physical Properties of MTA Fillapex Sealer. JOE – Volume 39, Number 7, July 2013
103. VIVAN, R.R.; ET AL. Avaliação da radiopacidade de diferentes materiais utilizados como retrobturadores. SALUSVITA, Bauru, v. 31, n. 2, p. 105-117, 2012.
104. VOGT, B.F. Efeito do Agregado Trióxido Mineral intracanal em um modelo de reimplante tardio em dentes de ratos – análise histológica e imunoistoquímica. Tese de doutorado, Área de Concentração em Cirurgia e Traumatologia Bucomaxilofacial. Faculdade de Odontologia da Pontifícia Universidade Católica do Rio Grande do Sul. 2011
105. VOGT, B.F. Efeito do agregado trióxido mineral intracanal em um modelo de reimplante tardio em dentes de ratos - análise histológica e imunoistoquímica. Tese apresentada como parte dos requisitos para a obtenção do título de Doutor em Odontologia, Área de Concentração em Cirurgia e Traumatologia Bucomaxilofacial, pelo Programa de Pós-Graduação da Faculdade de Odontologia da Pontifícia Universidade Católica do Rio Grande do Sul 2011
106. WATANABE S, GOMES-FILHO JE, CINTRA LTA, BERNABÉ PFE, LODI CS, DEZAN-JUNIOR E, NERY MJ, OTOBONI-FILHO JÁ Reação do tecido conjuntivo de rato ao novo cimento a base de MTA Brazilian Oral Research, PNd025, Volume 25 Supplement 1 September 2011
107. ZAGO B.A.A., TRUIZ CF, ARAÚJO MC, HIRATA BS, RAMOS CAS; Cimento obturador MTA-Fillapex- Caso clínico - UEL 2011
108. ZAGO, B.A.A.; et al. Cimento obturador MTA Fillapex- Caso clínico - UEL 2011
109. ZEMENER, O.; LALIS, R.M.; PAMEIJER, C.; CHAVES, C.; KOKUBU, G. Intraosseous biocompatibility of an MTA-based and a zinc oxide and eugenol root canal sealer Endodontic Practice, august 2013 XX
110. ZEMENER, O.; LALIS, R.M.; PAMEIJER, C.; CHAVES, C.; KOKUBU, G.. Intraosseous Biocompatibility of an MTA-based and a zinc oxide and eugenol root canal sealer Endodontic Practice, august 2013 XX
111. ZHOU, H.M; SHEN, Y.; ZHENG, W.; HAAPSALAO, M. Physical Properties of 5 Root Canal Sealers. JOE – Volume 39, Number 10, October 2013

# Sealability of MTA and calcium hydroxide-containing sealers

João Eduardo GOMES-FILHO<sup>2</sup>, Jaqueline Viana MOREIRA<sup>5</sup>, Simone WATANABE<sup>4</sup>, Carolina Simonetti LODI<sup>4</sup>, Luciano Tavares Angelo CINTRA<sup>3</sup>, Eloi DEZAN JUNIOR<sup>2</sup>, Pedro Felício Estrada BERNABÉ<sup>1</sup>, Mauro Juvenal NERY<sup>2</sup>, José Arlindo OTOBONI FILHO<sup>2</sup>

1- DDS, MSc, PhD, Full Professor, Department of Endodontics, Araçatuba School of Dentistry, UNESP - Univ. Estadual Paulista, Araçatuba, SP, Brazil.

2- DDS, MSc, PhD, Associate Professor, Department of Endodontics, Araçatuba School of Dentistry, UNESP - Univ. Estadual Paulista, Araçatuba, SP, Brazil.

3- DDS, MSc, PhD, Assistant Professor, Department of Endodontics, Araçatuba School of Dentistry, UNESP - Univ. Estadual Paulista, Araçatuba, SP, Brazil.

4- DDS, MSc, Graduate Program in Pediatrics, Araçatuba School of Dentistry, UNESP - Univ. Estadual Paulista, Araçatuba, SP, Brazil.

5- Undergraduate student, Araçatuba School of Dentistry, UNESP - Univ. Estadual Paulista, Araçatuba, SP, Brazil.

**Corresponding address:** Dr. João Eduardo Gomes-Filho - Faculdade de Odontologia de Araçatuba, Universidade Estadual Paulista - R. José Bonifácio, 1193 - Araçatuba - SP - Brasil - Phone (0055) 18 36363252 - Fax: (0055) 18 36363279 - e-mail: joao@foa.unesp.br

Received: October 2, 2010 - Modification: August 16, 2011 - Accepted: September 1, 2011

## ABSTRACT

**Objectives:** The aim of this study was to evaluate the apical sealability of Fillapex<sup>®</sup>, Endo-CPM-Sealer<sup>®</sup> and Sealapex<sup>®</sup>. **Material and Methods:** Ninety-four freshly extracted single-rooted teeth were selected and decoronated. All teeth were radiographed to confirm the existence of a single and straight root canal, which was prepared using Protaper Universal and 2.5% sodium hypochlorite. The teeth were randomly divided in groups of 10 specimens each according to the sealer, and the canals were filled using the single cone technique and one of the sealers. Four additional teeth were used as controls. The teeth were submitted to dye leakage with Rhodamine B for 24 h but using vacuum on the initial 15 min. Thereafter, they were cut longitudinally and the leakage was measured in a linear fashion from apex to crown. Data were analyzed by ANOVA and Tukey's tests at 5% significance level. **Results:** Fillapex<sup>®</sup> and Sealapex<sup>®</sup> showed significantly less dye leakage than Endo-CPM-Sealer<sup>®</sup> ( $p < 0.05$ ). **Conclusions:** It was concluded that Fillapex<sup>®</sup> and Sealapex<sup>®</sup> were able to prevent apical dye leakage differently from Endo-CPM-Sealer<sup>®</sup>.

**Key words:** Root canal filling material. Leakage. Fillapex.





## Original Research Article

# Hydrogen ion and calcium releasing of MTA Fillapex® and MTA-based formulations

Milton Carlos Kuga<sup>1</sup>  
Edson Alves de Campos<sup>1</sup>  
Paloma Hernandez Viscardi<sup>2</sup>  
Paula Zapparoli Carrilho<sup>2</sup>  
Fernanda Castilho Xavier<sup>2</sup>  
Nayara Pereira Silvestre<sup>2</sup>

### Corresponding author:

Milton Carlos Kuga  
Avenida Saul Silveira, n. 5-01.  
CEP 17018-260 – Bauru – SP – Brasil  
E-mail: kuga@foar.unesp.br

<sup>1</sup> School of Dentistry of Araraquara, Sao Paulo State University – Araraquara – SP – Brazil.

<sup>2</sup> School of Dentistry, University Center of Rio Preto – Sao Jose do Rio Preto – SP – Brazil.

Received for publication: January 12, 2011. Accepted for publication: February 23, 2011.

### Keywords:

MTA; pH; calcium; sealer.

## Abstract

**Introduction:** MTA is composed of various metal oxides, calcium oxide and bismuth. It has good biological properties and is indicated in cases of endodontic complications. Several commercial formulations are available and further studies are necessary to evaluate these materials. **Objective:** To evaluate pH and calcium releasing of MTA Fillapex® compared with gray and white MTA. **Material and methods:** Gray and white MTA (Angelus) and MTA Fillapex® (Angelus) were manipulated and placed into polyethylene tubes and immersed in distilled water. The pH of these solutions was measured at 24 hours, 7 days and 14 days. Simultaneously, at these same aforementioned periods, these materials' calcium releasing was quantified, through atomic absorption spectrophotometry. The results were submitted to ANOVA, with level of significance at 5%. **Results:** Concerning to pH, the materials present similar behaviors among each other at 24 hours ( $p > 0.05$ ). At 7 and 14 days, MTA Fillapex® provided significantly lower pH values than the other materials ( $p < 0.05$ ). Regarding to calcium releasing, at 24 hours and 7 days, MTA Fillapex® provided lower releasing than the other materials ( $p < 0.05$ ). After 14 days, differences were found between MTA Fillapex® and gray MTA ( $p < 0.05$ ). **Conclusion:** All materials showed alkaline pH and calcium releasing, with significantly lower values for MTA Fillapex® sealer.



ISSN:  
Printed version: 1806-7727  
Electronic version: 1984-5685  
RSBO. 2011 Oct-Dec;8(4):404-9

## Original Research Article

# Comparison of MTA Fillapex radiopacity with five root canal sealers

Ana Paula Meirelles Vidotto<sup>1</sup>  
Rodrigo Sanches Cunha<sup>2</sup>  
Eduardo Gregatto Zeferino<sup>1</sup>  
Daniel Guimarães Pedro Rocha<sup>1</sup>  
Alexandre Sigrist de Martin<sup>1</sup>  
Carlos Eduardo da Silveira Bueno<sup>1</sup>

### Corresponding author:

Ana Paula Meirelles Vidotto  
Avenida Santa Isabel, n.º 241  
CEP 13084-755 – Campinas – SP – Brasil  
E-mail: ana\_vidotto@hotmail.com

<sup>1</sup> São Leopoldo Mandic Research Center – Campinas – SP – Brazil.

<sup>2</sup> University of Manitoba – Winnipeg – MB – Canada.

*Received for publication: February 4, 2011. Accepted for publication: March 30, 2011.*

**Keywords:** obturation;  
root canal sealer;  
radiopacity.

## Abstract

**Introduction:** The endodontic sealer is a filling material whose physicochemical properties are mandatory for the achievement of endodontic therapy final goal. An ideal endodontic sealer should have some properties, including radiopacity. **Objective:** This study compared MTA Fillapex™ radiopacity with the radiopacity of five others endodontic sealers: Endométhasone-N™, AH Plus™, Acroseal™, Epiphany SE™ and RoekoSeal™. **Material and methods:** Five cylindrical samples of each sealer were used, constructed with the aid of a matrix. On an occlusal film, a sample of each sealer was placed along with an aluminum stepwedge and five radiographic shots were taken. The radiographic images were digitized and each sample's gray scales were compared with each shade of the aluminum stepwedge, by using software. **Results:** The results, in decreasing order of radiopacity, were: AH Plus™ was statistically the most radiopaque sealer (9.4 mm Al), followed by Epiphany SE™ (7.8 mm Al), MTA Fillapex™ (6.5 mm Al), RoekoSeal™ (5.8 mm Al), Endométhasone-N™ (4.5 mm Al), and Acroseal™, the least statistically radiopaque (3.5 mm Al). **Conclusion:** It can be concluded that MTA Fillapex™ was the third most radiopaque sealer among all tested sealers. Also, MTA Fillapex™ has the radiopacity degree in agreement with ADA specification No. 57 (1983).



## Dental Traumatology

*Dental Traumatology* 2011; doi: 10.1111/j.1600-9657.2011.01096.x

# Rat tissue reaction to MTA FILLAPEX®

**João Eduardo Gomes-Filho,  
Simone Watanabe, Carolina  
Simonetti Lodi, Luciano Tavares  
Angelo Cintra, Mauro Juvenal  
Nery, José Arlindo Otoboni Filho,  
Elói Dezan Jr, Pedro Felício  
Estrada Bernabé**

Department of Endodontics, Araçatuba School  
of Dentistry, University of Estadual Paulista, São  
Paulo, Brazil

Correspondence to: Dr João Eduardo  
Gomes-Filho, Department of Endodontics,  
Araçatuba School of Dentistry, University of  
Estadual Paulista, R. José Bonifácio, 1193,  
Araçatuba, São Paulo, Brazil  
Tel.: +0055 18 36363252  
Fax: +0055 18 36363279  
e-mail: joao@foa.unesp.br

Accepted 6 November, 2011

**Abstract** – The aim of this study was to evaluate the rat subcutaneous tissue reaction to implanted polyethylene tubes filled with mineral trioxide aggregate (MTA) FILLAPEX® compared to the reaction to tubes filled with Sealapex® or Angelus MTA®. These materials were placed in polyethylene tubes and implanted into the dorsal connective tissue of Wistar rats for 7, 15, 30, 60, and 90 days. The specimens were stained with hematoxylin and eosin or Von Kossa or left unstained for examination under polarized light. Qualitative and quantitative evaluations of the reaction were performed. All materials caused moderate reactions after 7 days, which decreased with time. The reactions were moderate and similar to that evoked by the control and Sealapex® on the 15th day. MTA FILLAPEX® and Angelus MTA caused mild reactions beginning after 15 days. Mineralization and granulation birefringent to polarized light were observed with all materials. It was concluded that MTA FILLAPEX® was biocompatible and stimulated mineralization.

# Mineral Trioxide Aggregate–based Endodontic Sealer Stimulates Hydroxyapatite Nucleation in Human Osteoblast-like Cell Culture

Loise Pedrosa Salles, MSc,<sup>\*†</sup> Ana Livia Gomes-Cornélio, MSc,<sup>\*</sup> Felipe Coutinho Guimarães, MSc,<sup>†</sup> Bruno Schneider Herrera, PhD,<sup>‡</sup> Sonia Nair Bao, PhD,<sup>†</sup> Carlos Rossa-Junior, PhD,<sup>‡</sup> Juliane Maria Guerreiro-Tanomaru, PhD,<sup>\*</sup> and Mario Tanomaru-Filho, PhD<sup>\*</sup>

## Abstract

**Introduction:** The main purpose of this study was to evaluate the biocompatibility and bioactivity of a new mineral trioxide aggregate (MTA)-based endodontic sealer, MTA Fillapex (MTA-F; Angelus, Londrina, Brazil), in human cell culture. **Methods:** Human osteoblast-like cells (Saos-2) were exposed for 1, 2, 3, and 7 days to MTA-F, Epiphany SE (EP-SE; SybronEndo, Orange, CA), and zinc oxide–eugenol sealer (ZOE). Unexposed cultures were the control group (CT). The viability of the cells was assessed by MTT assay and the morphology by scanning electron microscopy (SEM). The bioactivity of MTA-F was evaluated by alkaline phosphatase activity (ALP) and the detection of calcium deposits in the culture with alizarin red stain (ARS). Energy-dispersive X-ray spectroscopy (EDS) was used to chemically characterize the hydroxyapatite crystallites (HAP). Saos-2 cells were cultured for 21 days for ARS and SEM/EDS. ARS results were expressed as the number of stained nodules per area. Statistical analysis was performed with analysis of variance and Bonferroni tests ( $P < .01$ ). **Results:** MTA-F exposure for 1, 2, and 3 days resulted in increased cytotoxicity. In contrast, viability increased after 7 days of exposure to MTA-F. Exposure to EP-SE and ZOE was cytotoxic at all time points. At day 7, ALP activity increase was significant in the MTA-F group. MTA-F presented the highest percentage of ARS-stained nodules (MTA-F > CT > EP-SE > ZOE). SEM/EDS analysis showed hydroxyapatite crystals only in the MTA-F and CT groups. In the MTA-F group, crystallite morphology and chemical composition were different from CT. **Conclusions:** After setting, the cytotoxicity of MTA-F decreases and the sealer presents suitable bioactivity to stimulate HAP crystal nucleation. (*J Endod* 2012; ■:1–6)

## Key Words

Bioactivity, biocompatibility, hydroxyapatite, mineral trioxide aggregate sealer

Mineral trioxide aggregate (MTA) emerged as the material of choice for root perforation repairs and root-end fillings in the 90s, a revolutionary period marked by many advances in endodontics (1). MTA was developed at Loma Linda University and received approval from the Food and Drug Administration for human use in 1998 (2, 3). Since then, MTA has shown excellent biological properties in several *in vivo* and *in vitro* studies (4–9). In cell culture systems, for example, MTA has been shown to enhance proliferation of periodontal ligament fibroblasts (6), to induce differentiation of osteoblasts (7, 8), and to stimulate mineralization of dental pulp cells (9). This biocompatibility and bioactive potential raised the interest of scientists worldwide to improve the handling characteristics and some physicochemical properties of MTA with the intention of expanding its applicability in endodontics. Consequently, new MTA-based root-end filling cements and root canal sealers have been proposed (10–12), such as MTA Fillapex (MTA-F; Angelus, Londrina, Brazil).

The new MTA-based sealers reflect a current requirement to have materials for endodontic therapy that are able to stimulate the healing process of periapical tissues, instead of merely biocompatible or inert materials. As a result, MTA-F represents the effort in combining a material of excellent biological properties as MTA with resins and other components to improve diverse required properties of an endodontic sealer including adhesiveness, dimensional stability, working time, radiopacity, flow, and antibacterial effects. According to the manufacturer's information, MTA-F is composed of salicylate resin, resin diluent, natural resin, bismuth oxide as radiopacifying agent, silica nanoparticles, MTA, and pigments. The MTA itself consists of fine hydrophilic particles of tricalcium silicate, tricalcium aluminum oxide, tricalcium oxide, gypsum (calcium sulfate dihydrate), and other mineral oxides (3). Gypsum is an important determinant of setting time. MTA cements generally contain less gypsum to allow more handling time. Unfortunately, MTA-F data sheet lacks details about the natural resin, pigments, and diluents composition.

It is important to investigate if the combination of these resins and other constituents influence the bioactive potential of MTA in the new endodontic sealer. Therefore, the main purpose of this study was to evaluate the biocompatibility and the bioactivity of MTA-F in stimulating mineralization in Saos-2 cell culture compared with Epiphany SE




[Start](#) | [Browse by Day](#) | [Author Index](#) | [Keyword Index](#)
**721 Evaluation of a MTA-based sealer histocompatibility in subcutaneous tissue**

Thursday, June 21, 2012: 11:45 a.m. - 1 p.m.

Location: Poster Hall (Convention Center)

Presentation Type: Poster Session

**R.V. FERINO, M. TANOMARU-FILHO, G.F. SILVA, E. SASSO-CERRI, J.M. GUERREIRO-TANOMARU, and P.S. CERRI**, *Dentística Restauradora, Faculdade de Odontologia de Araraquara, UNESP Univ Estadual Paulista, Câmpus Araraquara, Araraquara / SP, Brazil*

**Objective:** Mineral Trioxide Aggregate (MTA) has been widely used in endodontic treatment due to its good marginal adaptation and biocompatibility. In attempt to associate physicochemical properties of a root canal sealer with MTA biocompatibility, some modifications have been made with the aim to improve its use as a root canal sealer. Thus, the tissue reaction promoted by a MTA-based sealer (MTA-Fillapex) in rat subcutaneous was investigated by morphological and morphometric analyses

**Method:** Eighty rats were distributed into 4 groups (n=20); in each animal, a polyethylene tube filled with MTA-Fillapex, MTA, AH-Plus or Fill Canal was implanted in the dorsal subcutaneous. After 7, 15, 30 and 60 days, the tubes surrounded by connective tissue were removed, fixed and embedded in paraffin. In the HE-stained sections, the numerical density of inflammatory cells (IC) in the capsule was evaluated and statistical analyses were performed using ANOVA and Tukey's test ( $p \leq 0.05$ ). Sections were also submitted to von Kossa method for detection of calcified structures

**Result:** At 7 and 15 days, the number of IC was significantly higher in the capsule of the MTA-Fillapex in comparison to other materials. However, significant reduction in the number of IC was verified in the capsule of the MTA-Fillapex in the 30 and 60 days when compared to the initial periods. At 60 days, the inflammatory reaction promoted by MTA-Fillapex was similar to MTA and significantly lower than Fill Canal. Otherwise, a gradual and significant increase was observed in the number of IC in the capsule adjacent to the Fill Canal. von Kossa-positive structures were observed in the capsule adjacent to the MTA-Fillapex, MTA and AH-Plus; positive structures were not seen in the capsule surrounding the Fill Canal

**Conclusion:** The results indicate that the biocompatibility of MTA-Fillapex is similar to MTA

**Keywords:** Biocompatibility, Dental materials, Endodontics and Root canal fillings

[See more of: Biocompatibility and Biologic Effects II](#)  
[See more of: Dental Materials 5: Biocompatibility and Biologic Effects](#)

[<< Previous Abstract](#) | [Next Abstract](#)

[Abstracts](#) | [Author Index](#) | [Keyword Index](#) | [Search](#) | [Help](#) | [Main Menu](#)

89TH GENERAL SESSION &amp; EXHIBITION OF THE IADR • SAN DIEGO CONVENTION CENTER • SAN DIEGO, CALIFORNIA, USA

**1164 MTA FILLAPEX® STIMULATED MINERALIZATION**

Thursday, March 17, 2011: 3:30 p.m. - 4:45 p.m.

Location: Hall C (San Diego Convention Center)

Presentation Type: Poster Session

**J.E. GOMES-FILHO<sup>1</sup>, S. WATANABE<sup>1</sup>, L.T.A. CINTRA<sup>1</sup>, C.S. LODI<sup>2</sup>, E. DEZAN, Jr.<sup>3</sup>, M.J. NERY<sup>4</sup>, and P.F.E. BERNABE<sup>1</sup>**, *<sup>1</sup>Endodontics, Universidade Est. Paulista Júlio Mesquita, Aracatuba, Brazil, <sup>2</sup>Pediatric Dentistry, Universidade Est. Paulista Júlio Mesquita, Aracatuba, Brazil, <sup>3</sup>Endodontics, Universidade Est. Paulista Júlio Mesquita, Aracatuba, Brazil, <sup>4</sup>Endodontics, Universidade Est. Paulista Júlio Mesquita, Aracatuba, Brazil*

**Objectives:** The aim of this study was to evaluate the rat subcutaneous tissue response to implanted polyethylene tubes filled with MTA Fillapex® (Angelus, Londrina, Brazil) compared Endo-CPM-Sealer® (Portland Cement Modified Sealer) (EGEO S.R.L., Buenos Aires, Argentina) and Sealapex® (SybronEndo, Glendora, CA). **Methods:** These materials were placed in polyethylene tubes and implanted into dorsal connective tissue of Wistar rats for 7, 15, 30, 60, and 90 days. The specimens were prepared to be stained with hematoxylin and eosin or Von Kossa or not stained for polarized light. Qualitative and quantitative evaluations of the reaction were performed. **Results:** All materials caused moderate reactions at 7 days that decreased with time. The response was similar to the control on the 15th day with Endo-CPM-Sealer® and Sealapex®. MTA Fillapex® caused mild reactions from 15 days on. Mineralization and granulations birefringent to the polarized light were observed with all materials. **Conclusions:** It was possible to conclude that MTA Fillapex® was biocompatible and stimulated mineralization. Supported by FAPESP #2009/11194-5 and #2009/00380-2

**Keywords:** Animal, Endodontics, MTA, Root canal fillings and Wound healing

[See more of: Dental Materials: Biocompatibility and Biologic Effects II](#)  
[See more of: Dental Materials 5: Biocompatibility and Biologic Effects](#)

[<< Previous Abstract](#) | [Next Abstract >>](#)

# Simplified!

Customer Service

☎ 43 9 9919 0244

+55 43 2101 3200

 /angelusodonto  
/angelusodontoglobal

 /AngelusOdonto

[www.angelus.ind.br](http://www.angelus.ind.br)

 angelus®

 angelus®  
Japan

 angelus®  
USA

  
PRIMA DENTAL  
by  angelus®